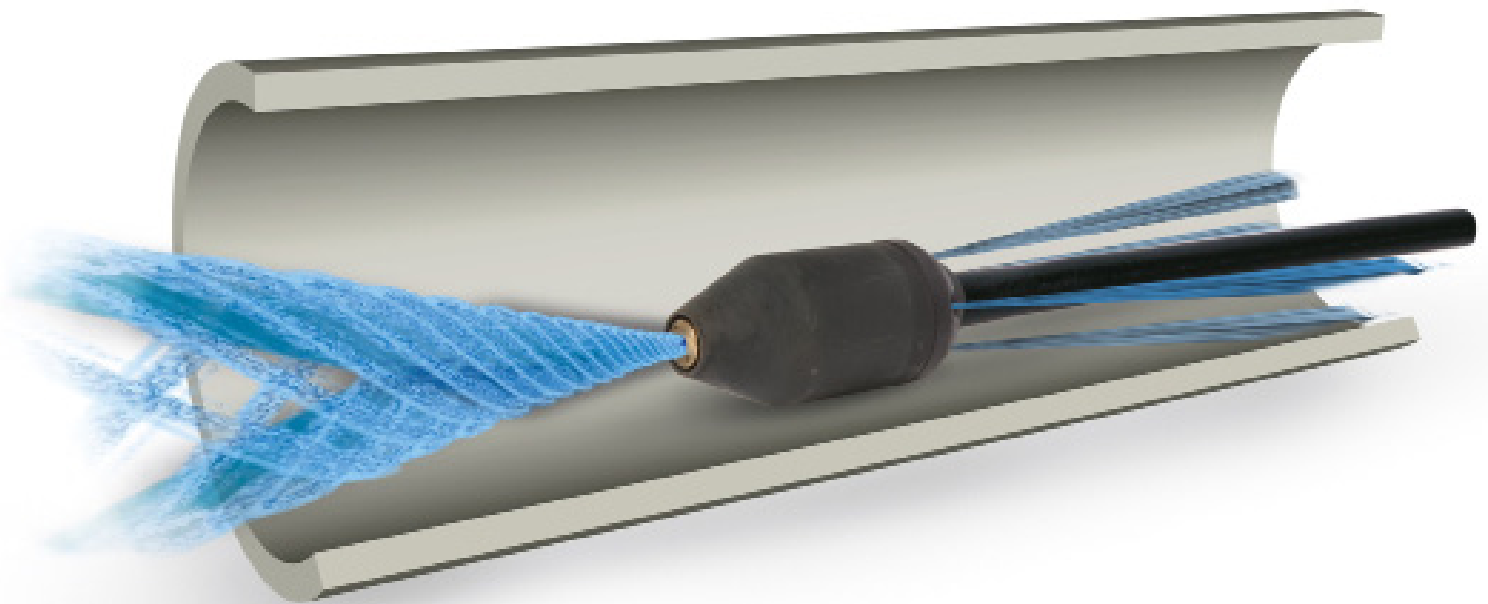


SEWER TURBO



Model CT300-060

- Pressure max. 4350 psi
- Spray angle to front 24°
- Spray angle to back 40°
- Temperature max. 195 °F
- Bearing Ceramic
- Nozzle Ceramic
- Nozzle-size 060
- Flow rate max. 180 l/min
- Length / Diameter 95 mm / Ø 55 mm
- Weight 800 g

Connection G 1" F
Connection NPT 1"

