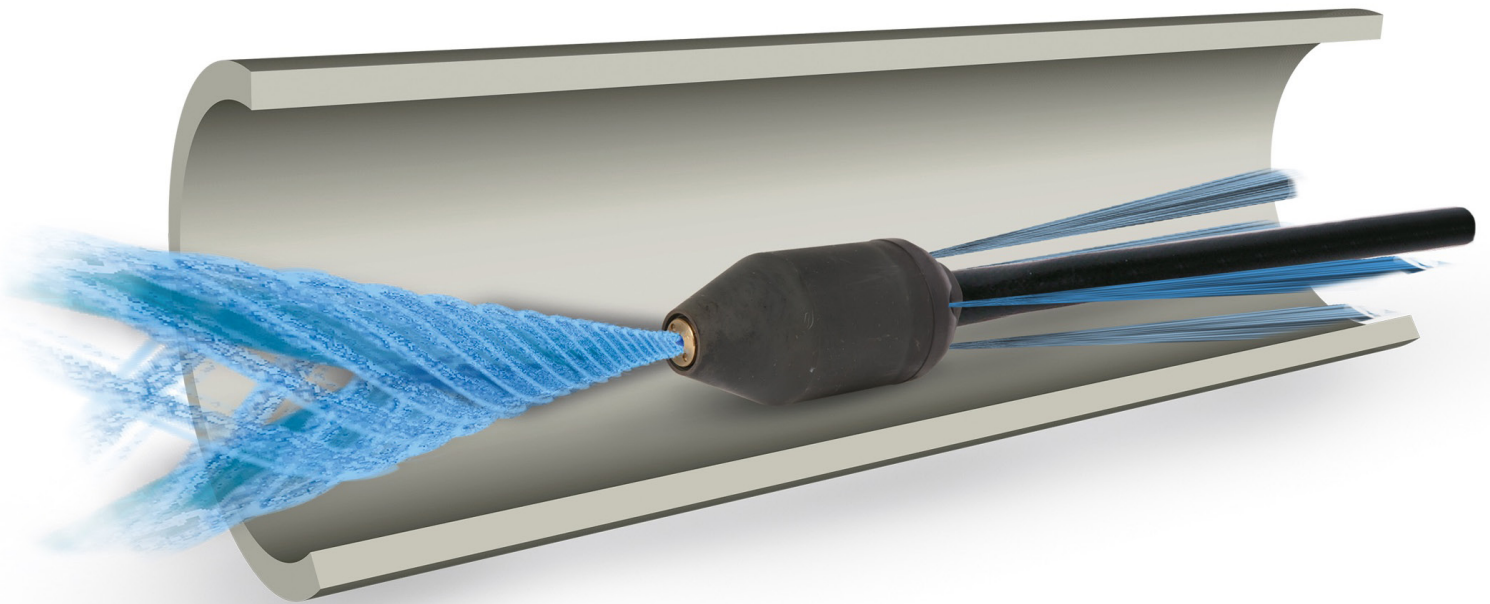


SEWER TURBO



Model CT300-040

- Pressure max. 4350 psi
- Spray angle to front 24°
- Spray angle to back 40°
- Temperature max. 195 °F
- Bearing Ceramic
- Nozzle Ceramic
- Nozzle-size 040
- Flow rate max. 60 l/min
- Length / Diameter 64 mm / Ø 40 mm
- Weight 300 g

Connection G 1/2" F
Connection NPT 1/2"

